

US ARMY CORPS OF ENGINEERS SOUTHWESTERN DIVISION



Command Brief



US Army Corps
of Engineers®



U.S. ARMY CORPS OF ENGINEERS

Over 245 Years of Service to the Nation



U.S. Capitol - 1800
Washington Monument - 1884
Lincoln Memorial - 1922



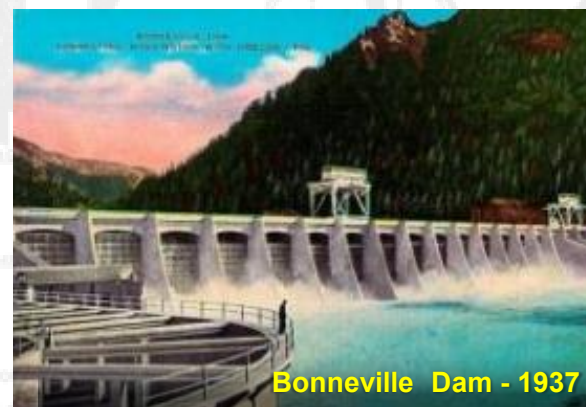
Southwest Border Wall
Project - 2019



The Pentagon - 1941



Panama Canal - 1914



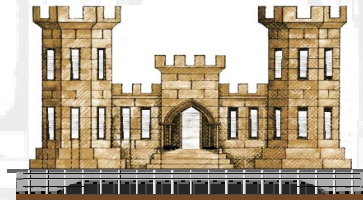
Bonneville Dam - 1937



Kennedy Space Center - 1962



USACE SUPPORT TO THE MILITARY





Deliver vital engineering solutions, in collaboration with our partners, to secure our Nation, energize our economy and reduce risk from disaster.





SOUTHWESTERN DIVISION

Division Leadership



Brig. Gen. Christopher G. Beck
SWD Commander



Colonel Kevin S. Brown
Deputy Commander



Mr. Pete G. Perez, SES
Director of Programs



Mr. John Bock
Interim Director of
Regional Business

District Commanders



Colonel Kenneth Reed
Ft Worth District



Colonel Timothy Vail
Galveston District



Colonel Eric Noe
Little Rock District



Colonel Scott Preston
Tulsa District

SOUTHWESTERN DIVISION

Providing vital public engineering services and water resource stewardship, in peace and war, to strengthen our Nation's security, energize the economy, and reduce disaster.



4 District Offices

Fort Worth District
Galveston District
Little Rock District
Tulsa District



60+ Military Personnel



~4,000 Civilian Personnel



~770 Civil Works Projects



23 Military Installations

CIVIL WORKS - planning, design, construction, and the operation and maintenance of critical water resource projects across the region.

6

States



~770

Civil Works Projects

\$1.1B

Executed FY20

NAVIGATION

600+M

tons of cargo transported annually

2nd



largest region for waterborne commerce in USACE

1,458

miles of channels



12 deep-water and 22 shallow-draft ports

WATER SUPPLY

75%

of USACE water supply storage



4B

can reliably supply 4B+ gallons of water per day

1/3

of the surface water supplies for Texas and Oklahoma

HYDROPOWER



18

USACE owned hydroelectric power plants in four states

6.3M

megawatt hours produced



625,500 households supplied with clean, renewable energy a year

RECREATION

11,400

miles of lake shoreline



28,112 campsites

83.6M

visits annually



1,250 recreation areas

FLOOD RISK MANAGEMENT

88

lakes



760 miles of local flood protection projects

33+M

acre-feet of flood storage

>\$190B

cumulative damages prevented



MILITARY - providing engineering, construction and environmental management services to support our Nation, service members and families

5

States

\$1.2B

Obligated FY20 Program



12

Air Force Installations



11

Army Installations

\$163M

Obligated FY20 Program Interagency & Internal Services

INTERAGENCY & INTERNATIONAL SERVICES



- providing technical assistance to non-Department of Defense (DoD) Federal agencies, state and local governments, tribal nations, private U.S. firms, international organizations, and foreign governments

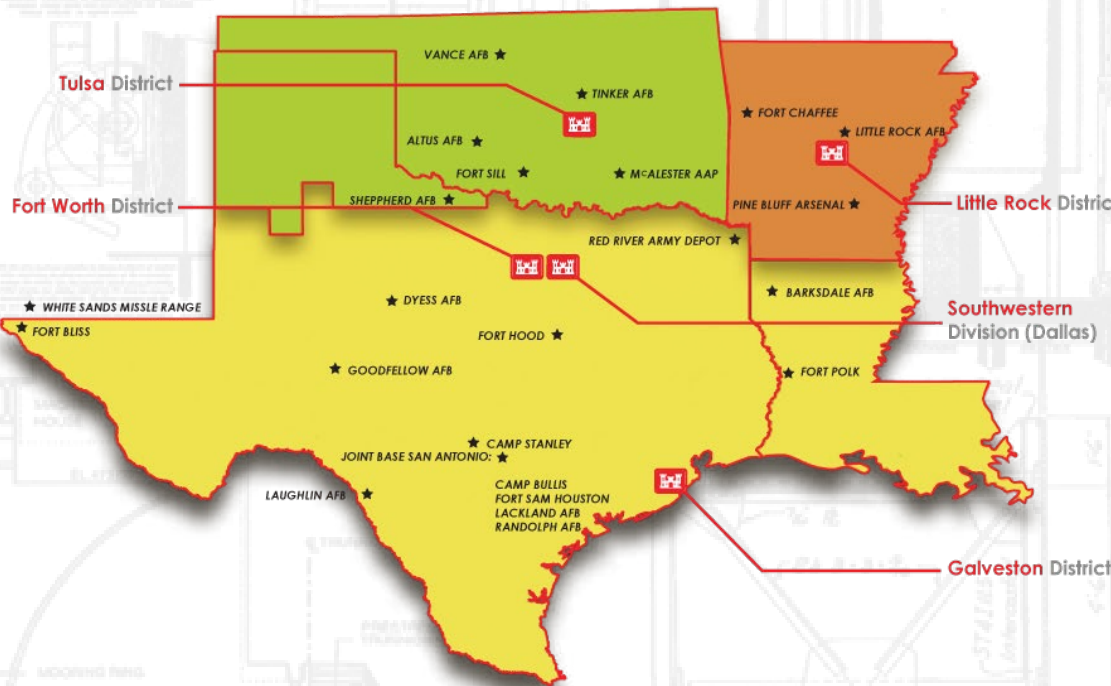


SOUTHWESTERN DIVISION



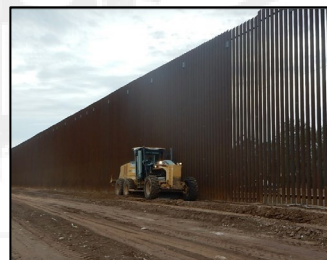
7

Military Mission



\$1.2B
Obligated FY20

23
Military Installations



**SWD is a HIGH PERFORMING ORGANIZATION that reliably delivers
QUALITY engineering products and services.**



SOUTHWESTERN DIVISION

Civil Works Program

~770

Civil Works Projects

\$1.1B

Executed FY20



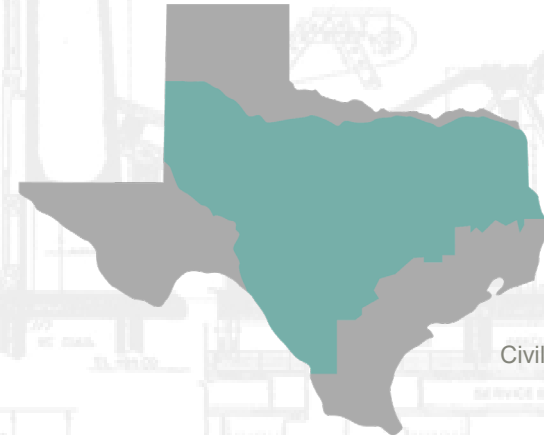
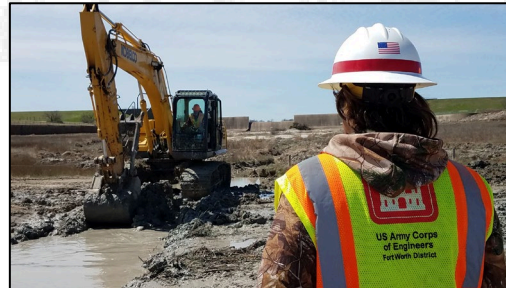
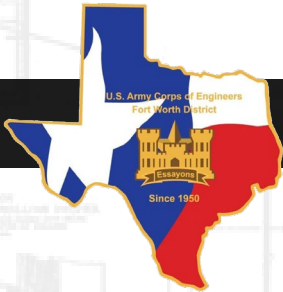
**SWD is a HIGH PERFORMING ORGANIZATION that reliably delivers
QUALITY engineering products and services.**



SOUTHWESTERN DIVISION



Fort Worth District



Civil Works Boundaries



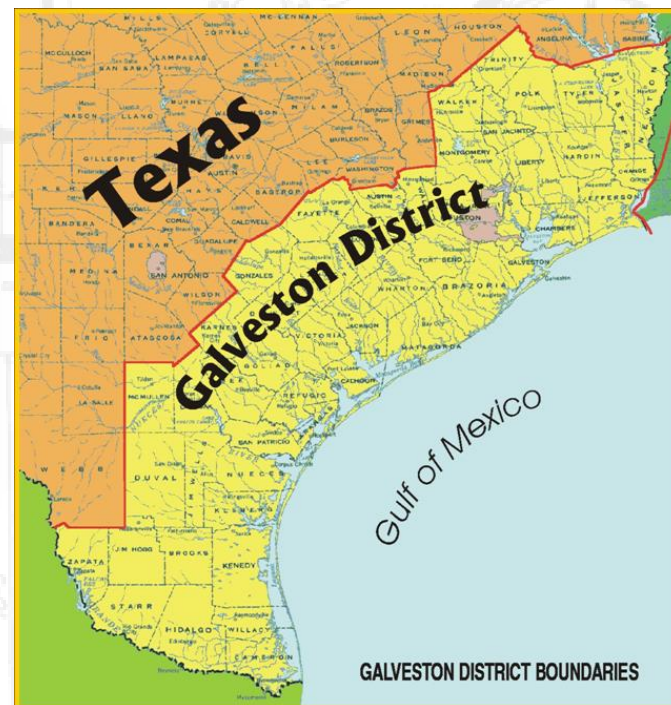
Military Boundaries



SOUTHWESTERN DIVISION



Galveston District

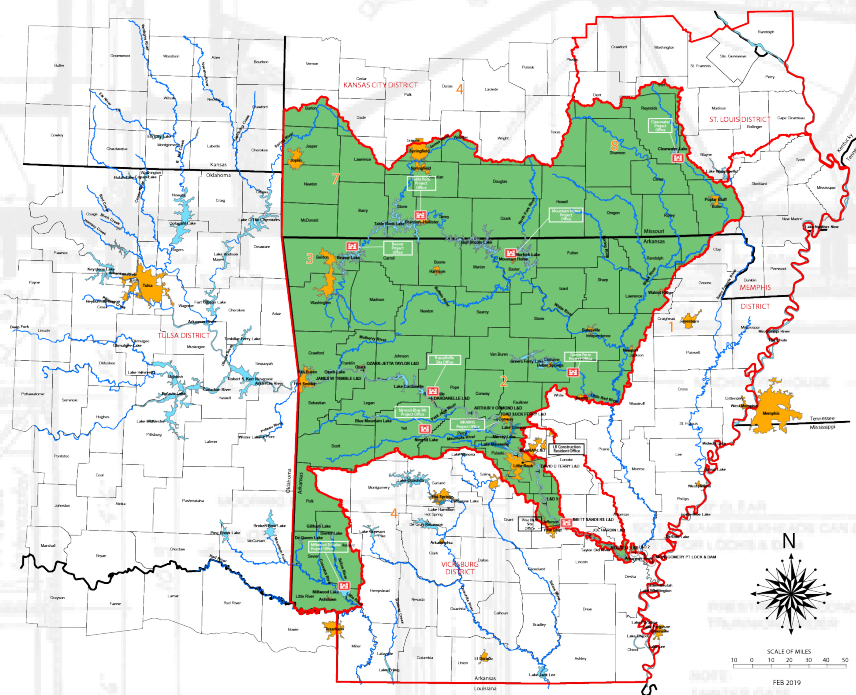
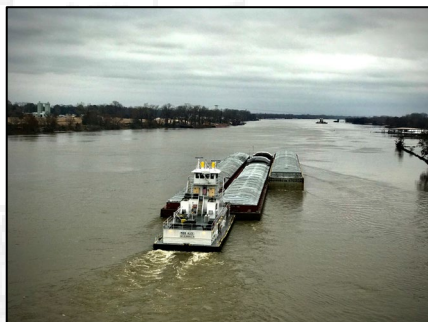
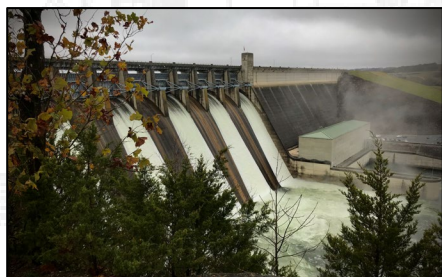




SOUTHWESTERN DIVISION



Little Rock District

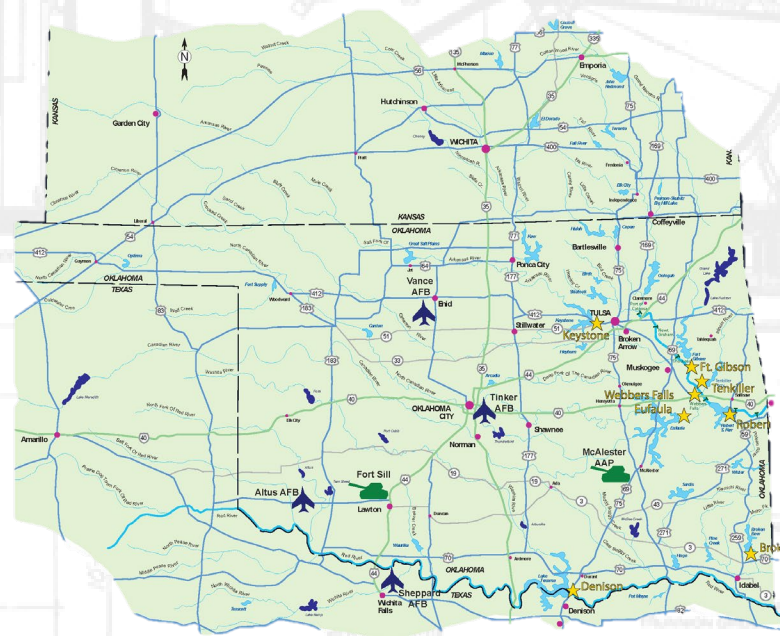
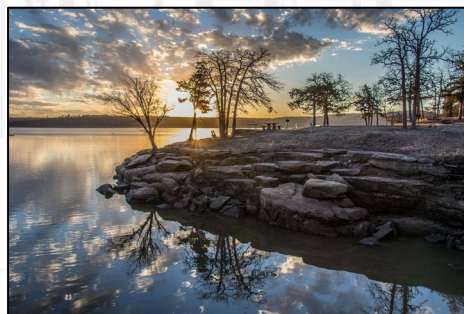




SOUTHWESTERN DIVISION



Tulsa District



NOTE:
FASTER GATE
NOT SHOWN



QUESTIONS?



CONNECT WITH US:



facebook.com/swdusace



[@usace_swg](https://twitter.com/usace_swg)



[@BrigGen_Beck](https://twitter.com/BrigGen_Beck)